



Scout

Less outside, more inside





The simplest of cylinders.

**The exterior is clean with
no visible seams or hardware.
Inside, a wealth of technology
remains hidden.**

Less outside, more inside.

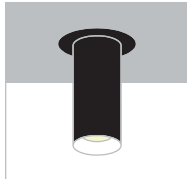


Standard options

Mounting types



Ceiling suspended ¹



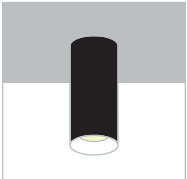
Ceiling surface ²



Wall surface

¹ Available on track, on a small track adaptor box with integrated LED driver
² No flat canopy for Ø4.5" product

No canopy



Recessed driver ³

³ 4548-6-RDP & 4548-10-RDP & 4548-18-RDP Slim tube installed without flat canopy (perforation hole: Ø2.5")

Colors



Diameters

Ø2.75" — Ø4.5"

Lengths

6.25" — 10.5" — 18"

Color index rendering (CRI)

80+ CRI — 90+ CRI

Color temperatures



Dimming options

0-10V dimming (DV) — Phase dimming (DP)

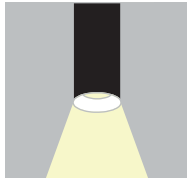
Light sources

- Regular output (up to 1394 delivered lumens)
- High output (up to 1914 delivered lumens)

Beam angles



Narrow



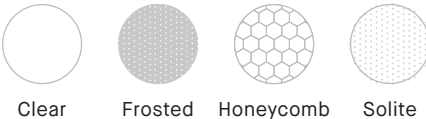
Medium



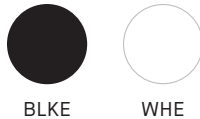
Wide ⁴

⁴ Not available with 3048, 4048 & 4548

Optical accessories

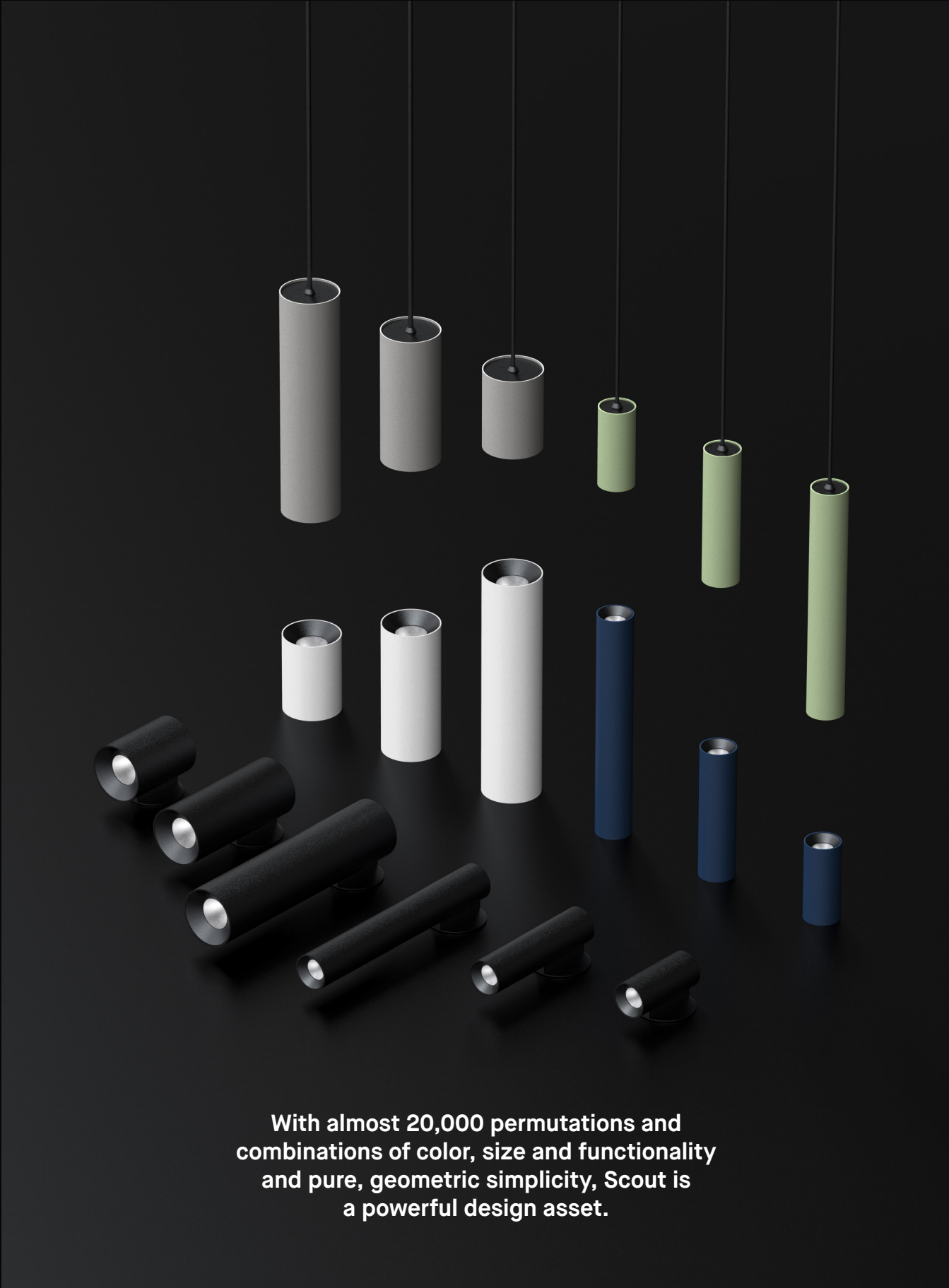


Baffles



Field replaceable

Reflectors, optical accessories and baffles are replaceable on site without the need of tools.



With almost 20,000 permutations and combinations of color, size and functionality and pure, geometric simplicity, Scout is a powerful design asset.



Maintain cohesion

Not only does Scout's clean look and elemental form discreetly house the latest lighting technology, with its vast array of options, it lets designers maintain a cohesive look and feel over multiple applications.



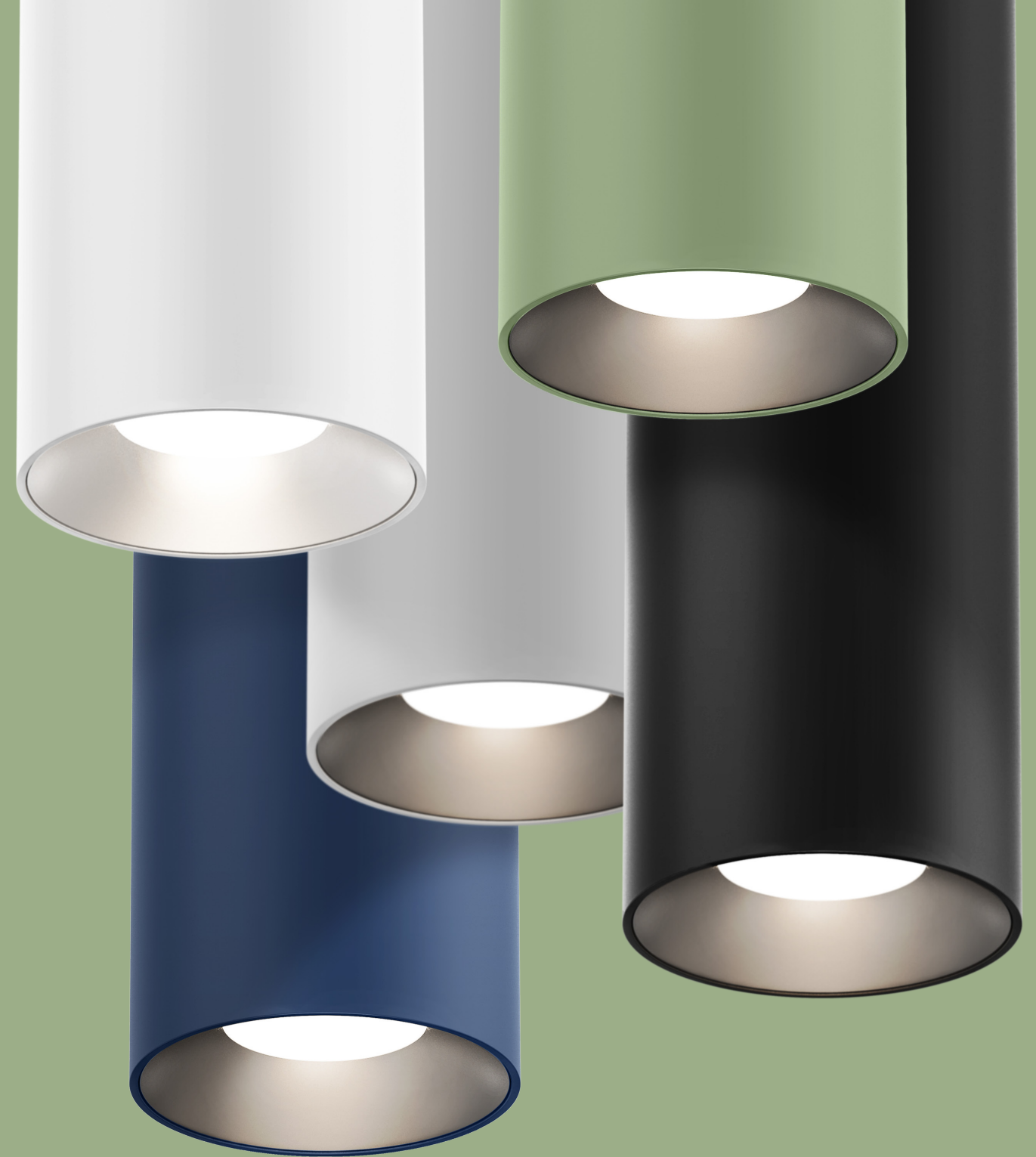
Contemporary palette

Scout is offered in 5 standard colors.

The extra matte finish paint has been specially developed to give each tone a rich and deep color.

Custom colors

Any RAL color available! Custom colors may be subject to longer lead times than the standard 15 days. Paint development costs and minimal ordering quantities may apply. Contact factory for details.



Choosing the right beam angle can make a big difference in a room.

Scout is offered in three convenient beam angles.

Light color and rendering

Standard CCT of 3000K, 3500K or 4000K in >80CRI (color rendering index). Other options, such as 2700K or 90CRI+ available as custom. Contact factory for details.



Narrow
24° - 28°

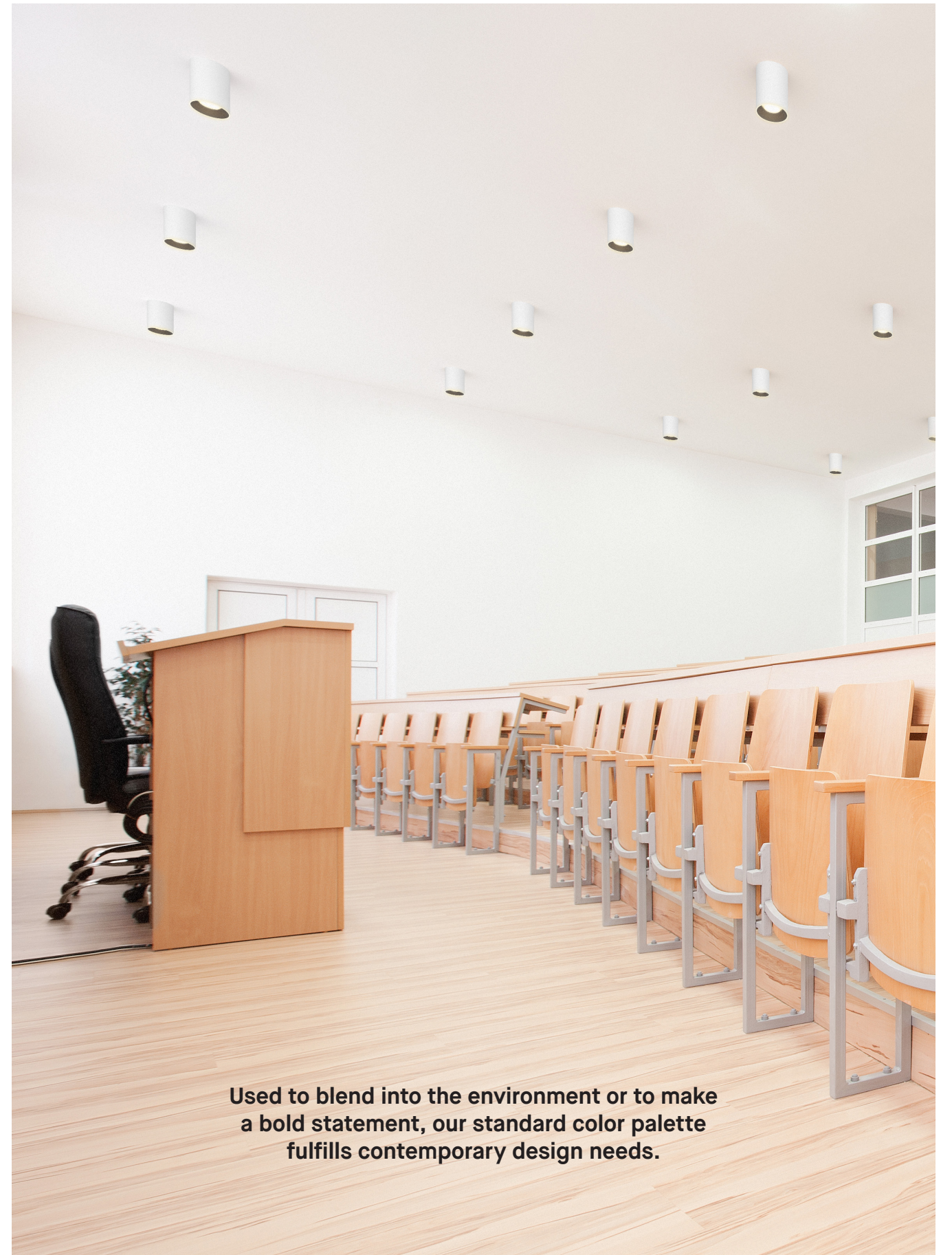
Medium
45° - 48°

Wide
64°



DESIGNER TIP

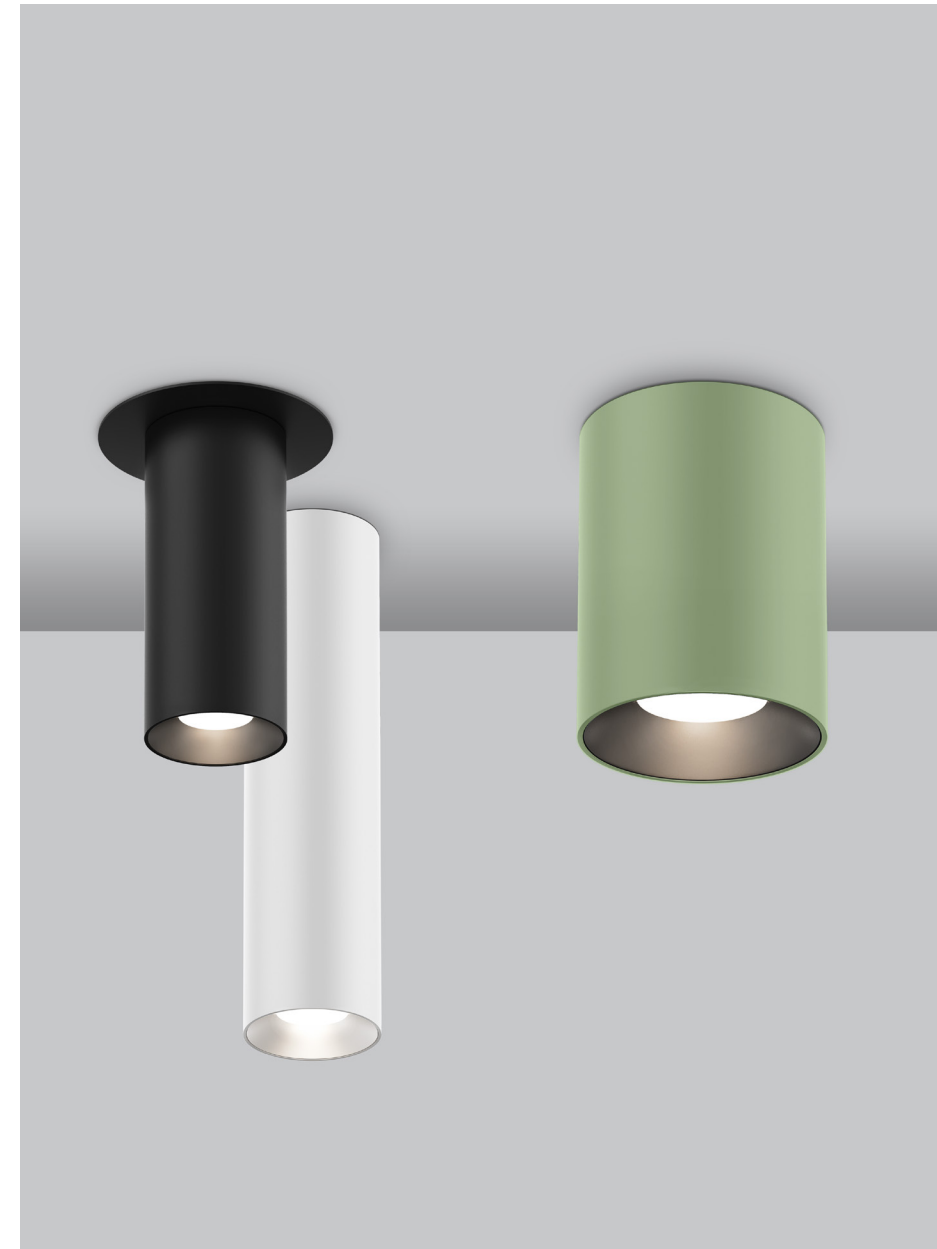
Use a narrow beam to focus on tables, bar and reception desk or a wider beam for general lighting on high ceiling applications.



Used to blend into the environment or to make a bold statement, our standard color palette fulfills contemporary design needs.

DESIGNER TIP

Every project has a corridor; Scout can be ceiling surface mounted to add rhythm to a corridor.





DESIGNER TIP

Scout can be wall mounted to provide ambiance to a space, to highlight an architectural component, or provide a dramatic effect on a textured wall.



Smooth operator

Scout can be considered for all type of projects: corporate, institutional, hospitality and even retail.







www.eurekalighting.com