



Arena

 EUREKA



Change management

Arena combines classic form with today's functionality. Round. Straight. Square. Rectangular. Arena offers a variety of clean, geometric shapes that enable playful statements in a space.

With its discreet, innovative power ring and snap on/off magnetic connections, Arena puts illumination in your hands.

Move and reconfigure multiple light sources to create a unique look and personalized light distribution.

Arena has already received multiple awards and accolades.





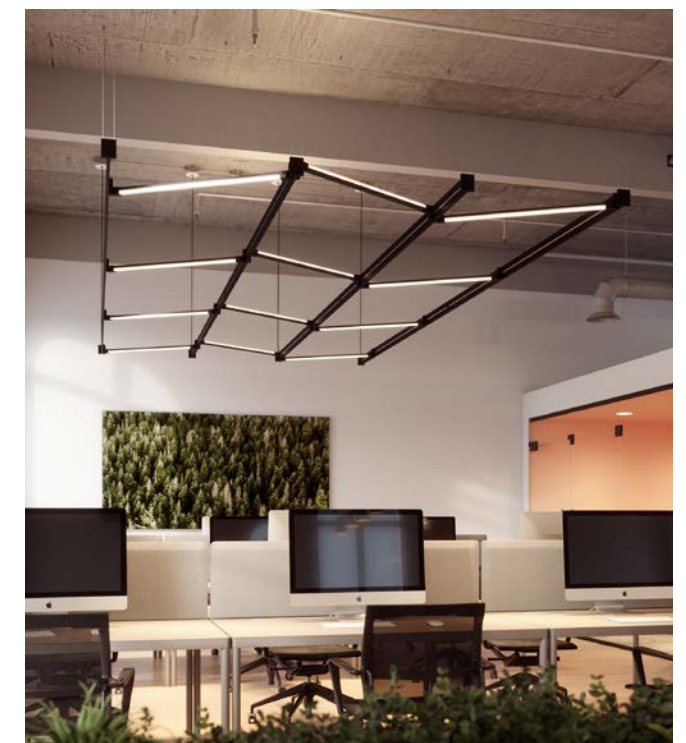
Products shown: Arena Ring & Arena - Slice-Round



Products shown: Arena Square, Arena Straight, Arena-Aim, Arena-Cone & Arena-Slice-Square

Designer's mark

Create a signature look for each project. With multiple choice of repositionable light sources, Arena allows unending customization to perfectly match the aesthetic and functional needs of the space in which it's installed.



Products shown: Arena Straight & Arena-Slice-Square



Go big or go bigger

Make your biggest mark yet. Specify Arena Square, Rectangle and Straight in lengths and shapes up to 32 feet.

Products shown: Arena Straight 190" (2 sections connected with a joiner), Arena Aim, Arena Slice, and Acoustic Baffle for Arena Straight



Products shown: Arena Rectangle 190X380", Arena Aim, Arena Mika, and Arena Ball



Products shown: Arena Rectangle 190X380", Arena Aim, Arena Scout, and Arena Ball

Attach
Move
Rotate
Group
Flip

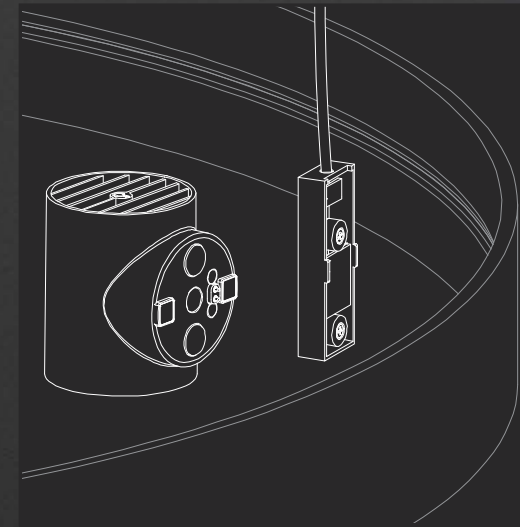
Power of attraction

Each light source is equipped with strong neodymium magnets for snap on/off connection to the low voltage strip. Safe to the touch, the discreet power drop also connects to the frame.

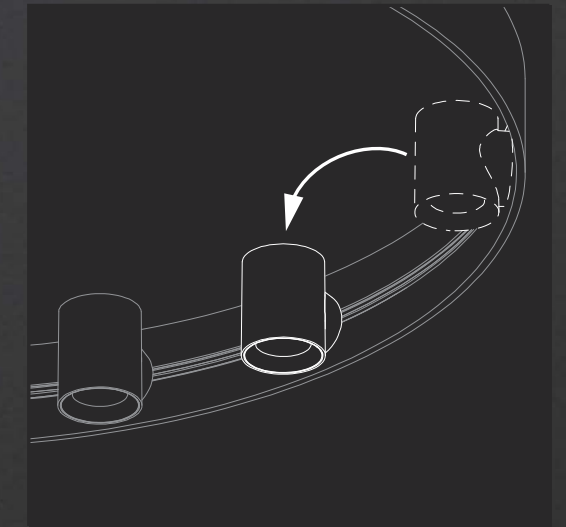
No tools – or electrician – are required to add, remove, or arrange the light sources. Move, spread out evenly, cluster, flip up or down, pivot, or aim - at will!

Mix and match light sources at will! The only limit is the DC load or the weight of the light sources. See specification sheets for more details.

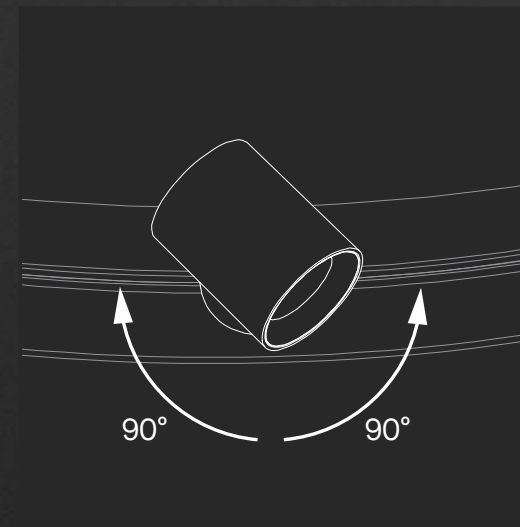
All accessories are interchangeable, with the exception of Arena-Slice-Round that only connects to Arena Ring.



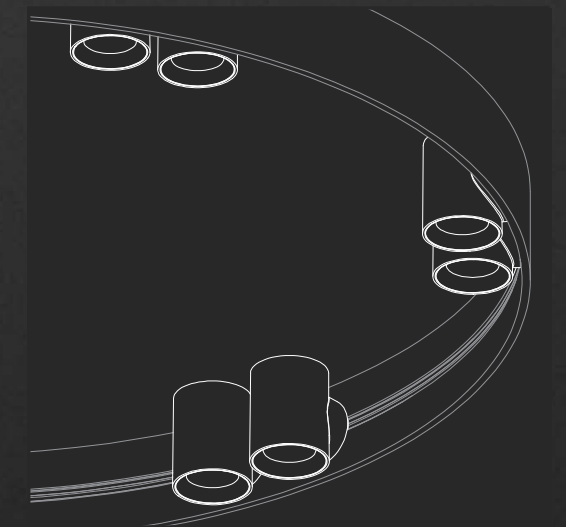
Light sources and power cable are secured by strong neodymium magnets.



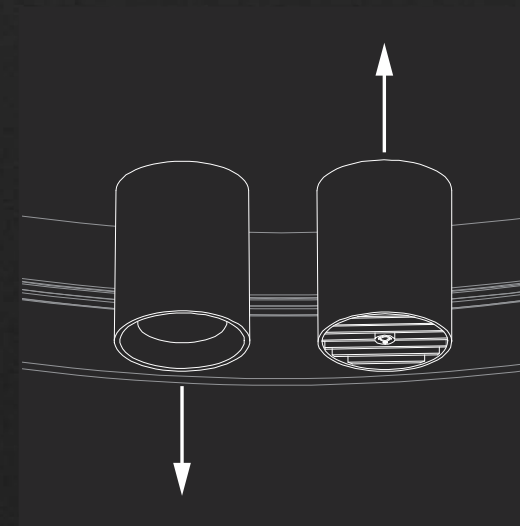
Position light sources on the Arena as desired.



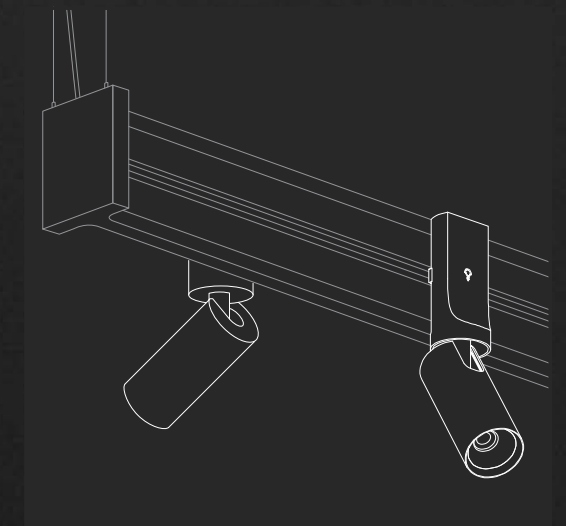
Arena-Beam & Arena-Glow light sources can be rotated sideways up to 90° in each direction.



Place light sources together to concentrate light or create a visual pattern.



Light sources can be flipped up or down for a direct or indirect illumination.



Arena Straight has a power strip on each side of the fixture, allowing light source connections on either side. Aircraft cable is doubled-up at each end to prevent an unbalanced fixture.



Aim

8292



Aim is a discreet 38mm diameter aimable projector with two available beam angles. The head rotates 350° and can be tilted up to 90° inward or outward for a wider lighting surface area. Aim can also be flipped vertically on the ring to enable direct or indirect illumination.

**Delivered lumens:
Up to 656lm per unit**

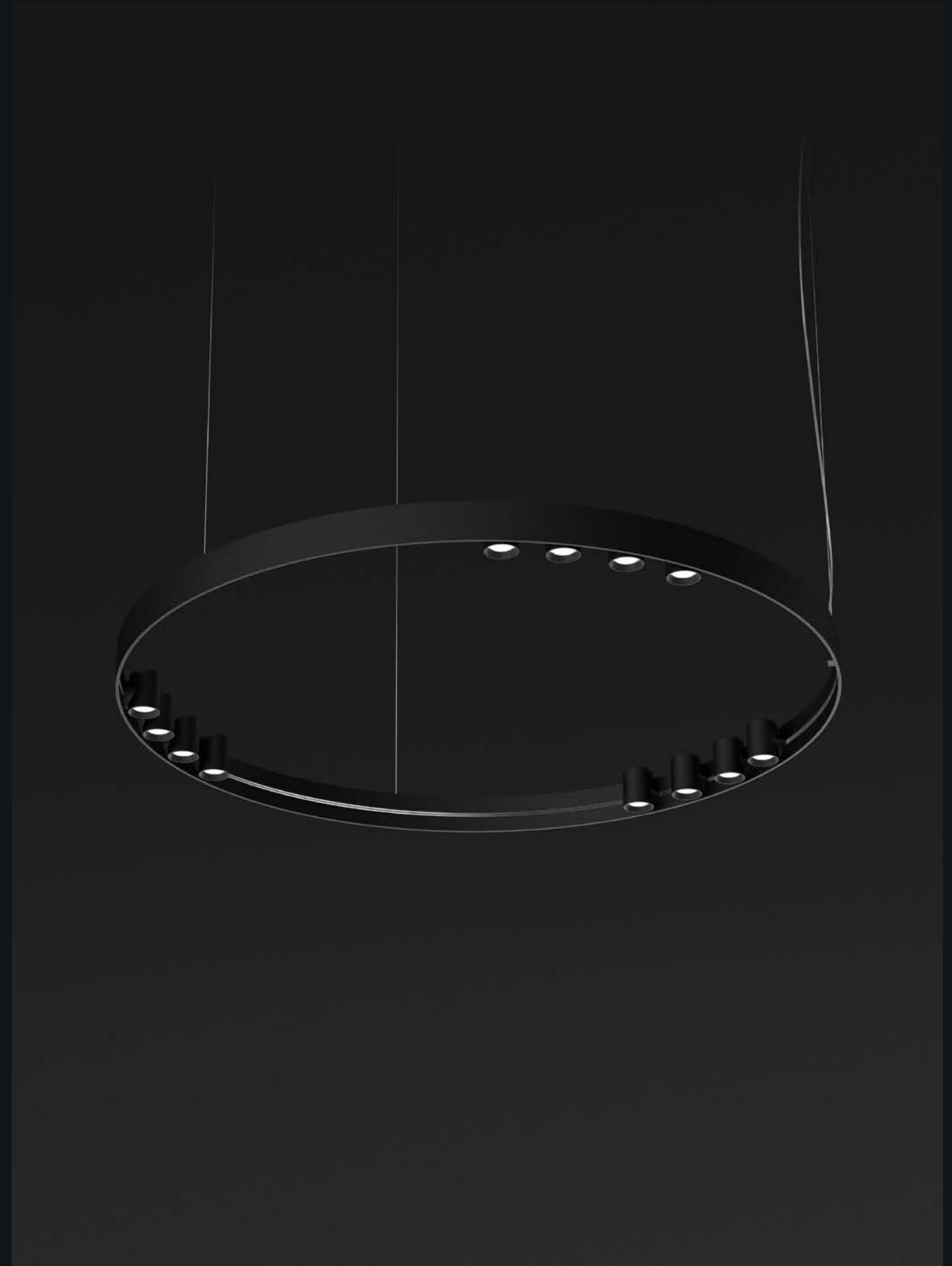
Beam

8290



The Beam head pivots 90° in each direction, and the entire light source can be flipped vertically on the ring to enable direct or indirect illumination. Beam hides discreetly behind the ring's height and shines brightly above or below. Beam is offered in three beam angles and with four optical accessories.

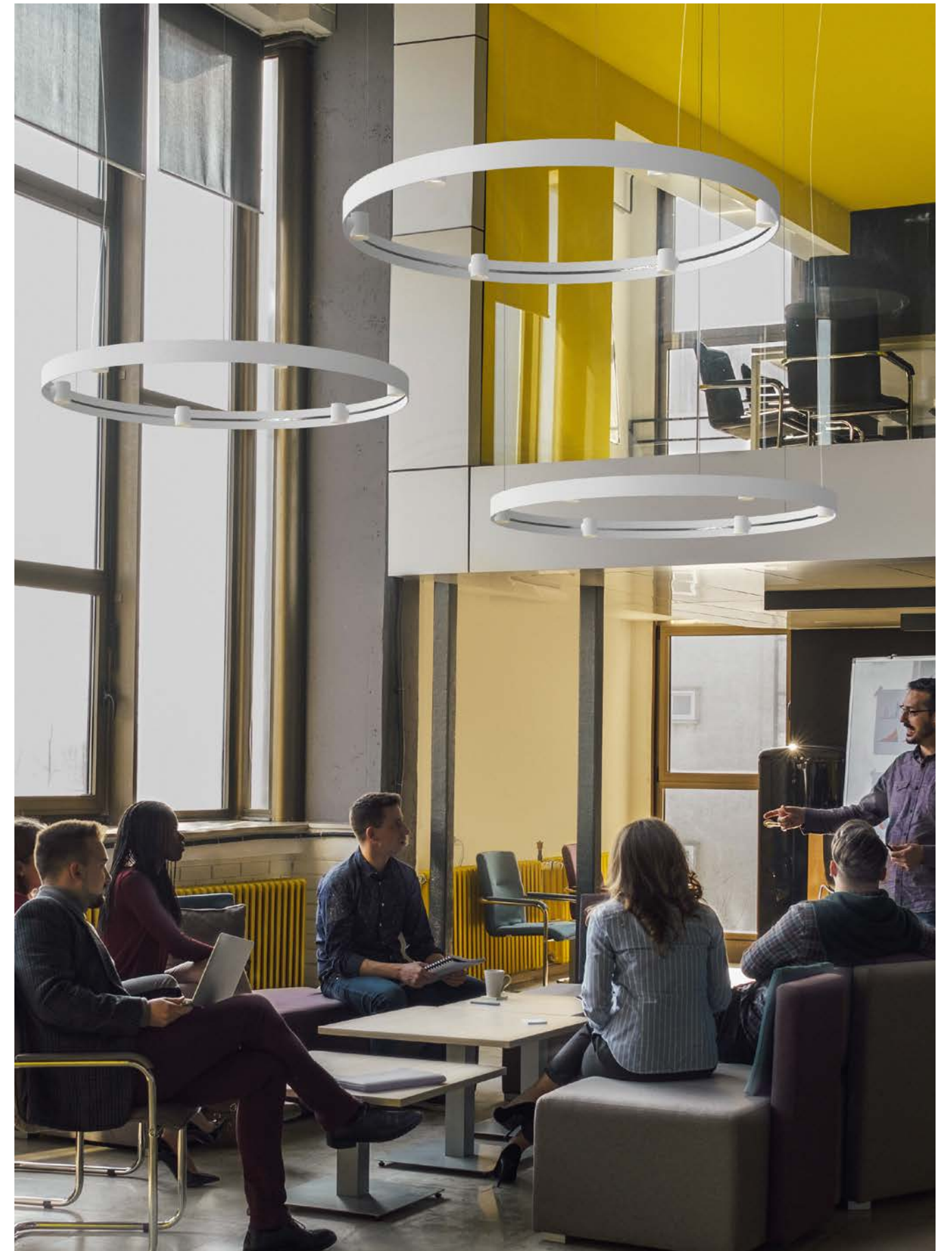
**Delivered lumens:
Up to 888lm per unit**



Pivot the light source to highlight an architectural detail or a specific piece of furniture. Aim precisely to focus on art or signage on the walls.



Products shown: Arena Ring & Arena-Aim



Products shown: Arena Ring & Arena-Beam

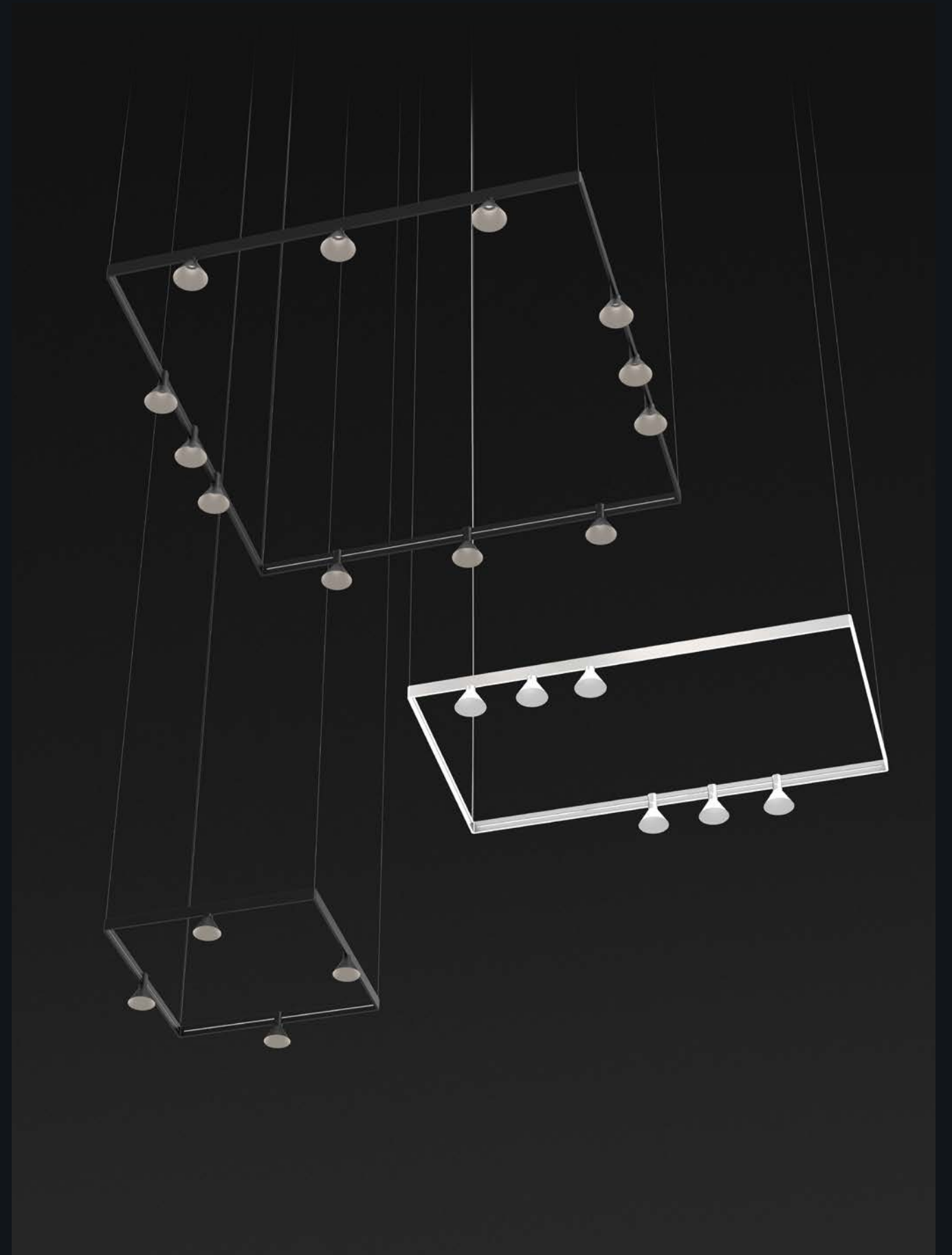
Cone

8294



Add a sleek, geometric aesthetic to Arena with Cone. Add specific points of light or cluster several together to create a unique presence. Cone features a COB light source with a 30° projection angle.

**Delivered lumens:
Up to 923lm per unit**





Products shown: Arena Straight & Arena-Cone



Products shown: Arena Straight & Arena-Cone

- ▲ Light sources can be positioned on both sides of Arena Straight.
- ◀ Use Arena-Cone above a table for functional light while adding a bold geometric element.



Ball

8295



Ball is a highly decorative light source with a double wall diffuser for an even light diffusion. Punctuate Arena with a series of spherical shapes while creating ambient light. Or double it up on Arena Straight for a full globe effect. The translucent white diffuser is comprised of impact resistant rotomolded LLDPE.

**Delivered lumens:
Up to 678lm per unit**



Products shown: Arena Ring, Arena Square & Arena-Ball



Products shown: Arena Straight, Arena-Aim & Arena-Ball

- ◀ Square. Rectangular. Round. Arena offers a variety of clean, basic shapes that enable playful statements in a space. Utilize the same Arena shape or the same light source to create a coherent design language that translates to impactful lobbies or hospitality settings.



Products shown: Arena Straight & Arena-Glow



Glow

8291



Glow is a decorative translucent light source that adds a touch of ambient luxury to the sleek ring profile. Using the same 60mm body as Beam, the head rotates 90° in each direction, and the entire accessory can be flipped vertically on the ring to enable direct or indirect illumination.

**Delivered lumens:
Up to 937lm per unit**

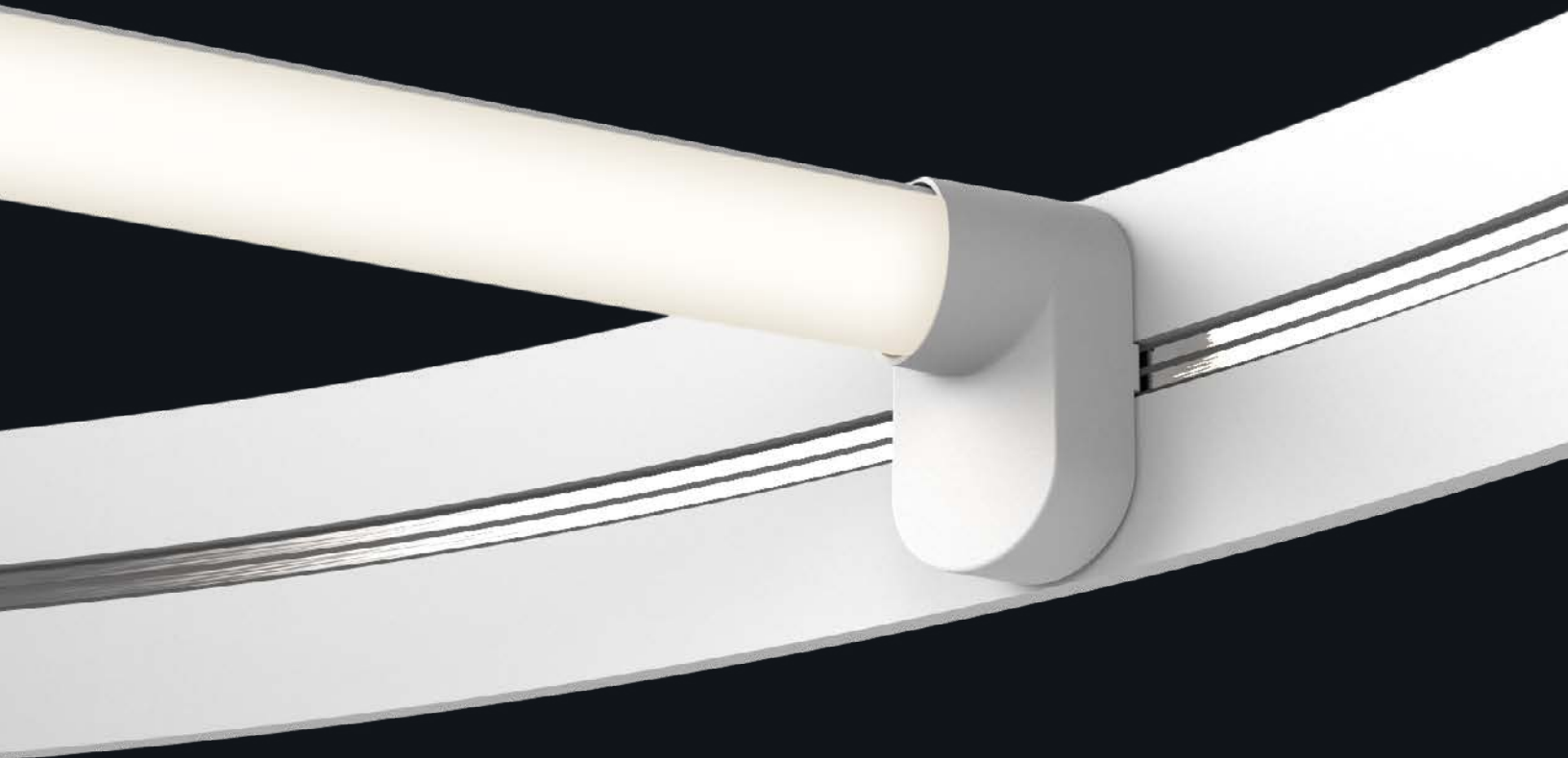


Products shown: Arena Ring & Arena-Glow

Inspired by a classic wagon wheel, Arena Ring proposes a sleek profile, with a timeless form and feel.

Slice-Round

8293



Slice-Round is an eye-catching decorative light source. The tubular translucent acrylic diffuser creates a visually striking statement of diffused ambient light. Each Slice-Round can be flipped for direct or indirect illumination and can be installed in overlapping heights to create unique intersections. Slice-Round only connects to Arena Ring.

Delivered lumens (36"):
Up to 1183lm per unit

Delivered lumens (54"):
Up to 1763lm per unit





Project: Wilfrid Laurier University.
Photo Credit: Robert Lowdon Photography.

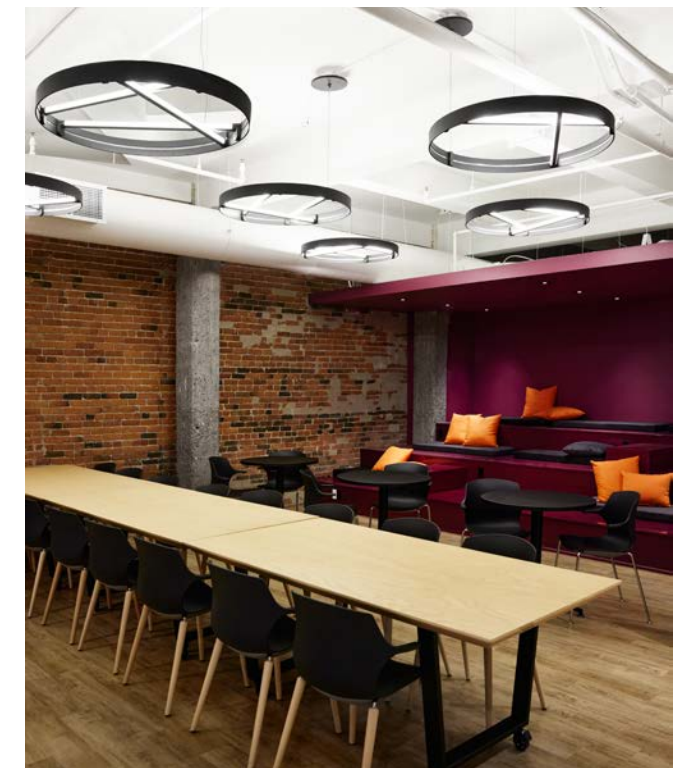


Project: Benchmark Capital.
Photo Credit: Kuoh Photography.

Each Arena-Slice-Round can be arranged, and re-arranged, in multiple configurations to suit an event. And they can be overlapped to create unique, eye-catching patterns.

“Slice adds style and uniqueness to enhance its surroundings.”

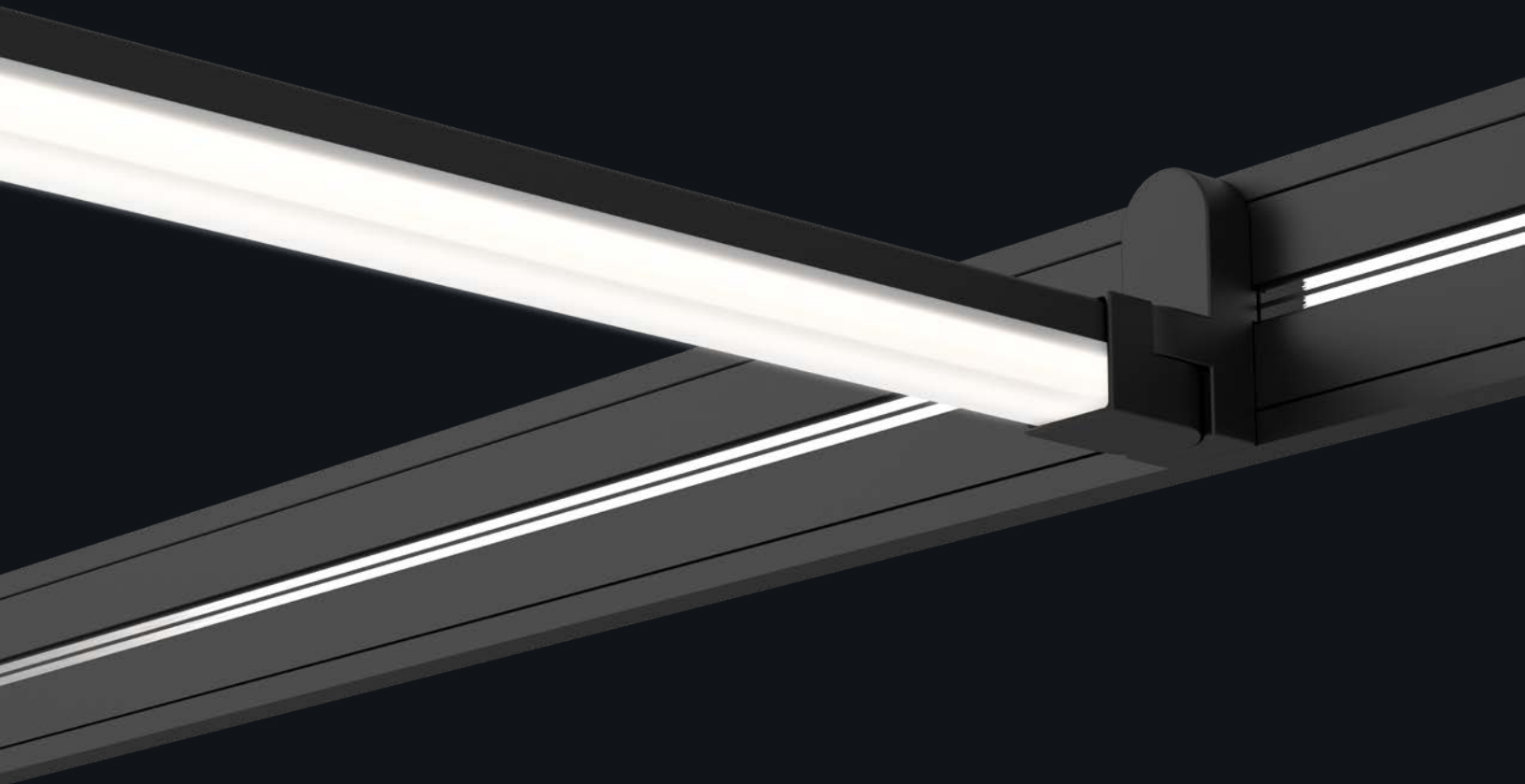
— Tahani Gunal,
senior designer, Dfy



Project: Jalon_MTL.
Photo Credit: Phil Bernard Photographie inc.

Slice-Square

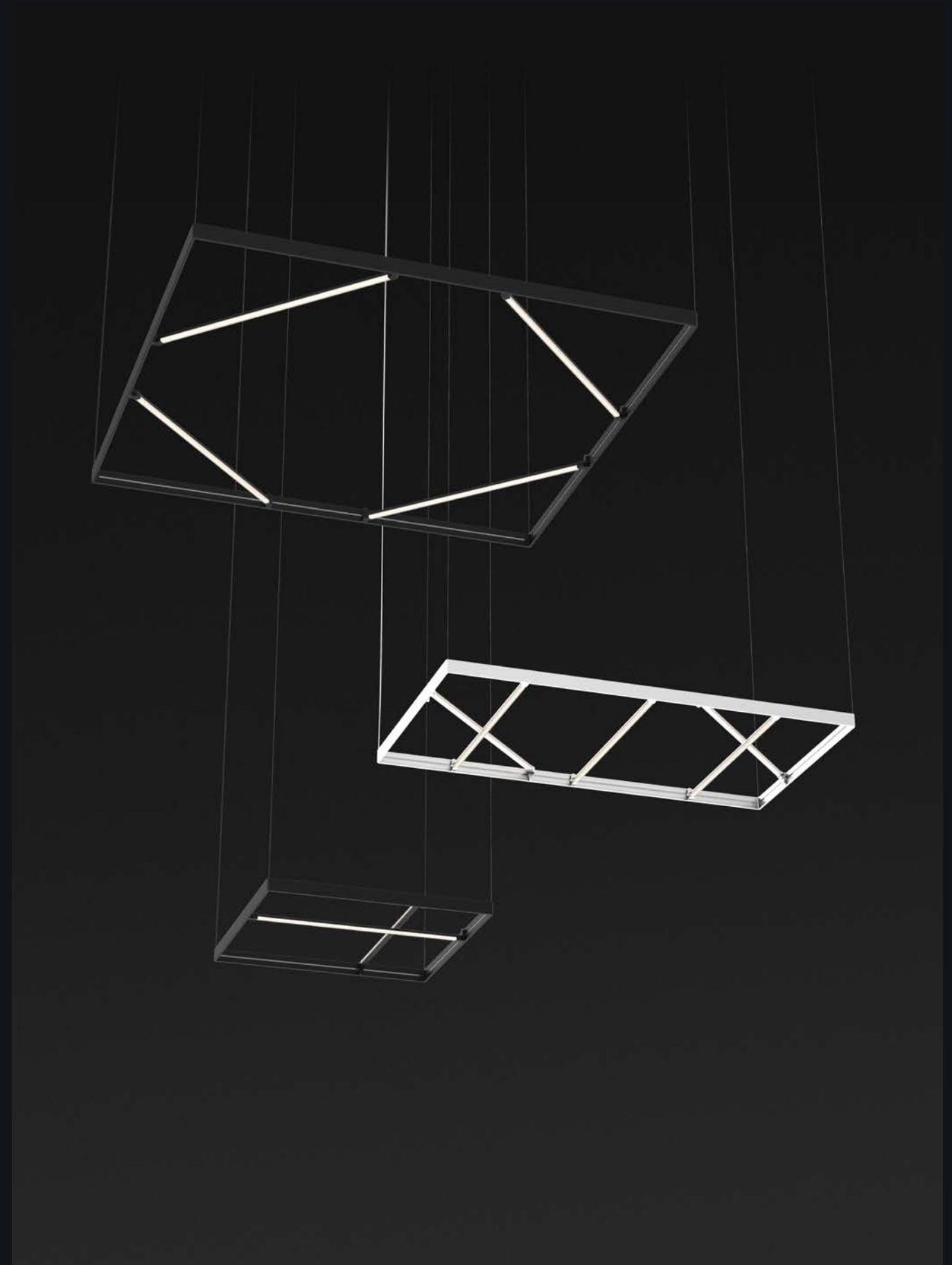
8296



Slice-Square is an engaging decorative light source with sharp lines. The rectilinear translucent acrylic diffuser creates a visually striking statement of diffused ambient light. Each Slice-Square can be flipped for direct or indirect illumination.

Delivered lumens (36"):
Up to 1156lm per unit

Delivered lumens (54"):
Up to 1729lm per unit





Products shown: Arena Straight & Arena-Slice-Square



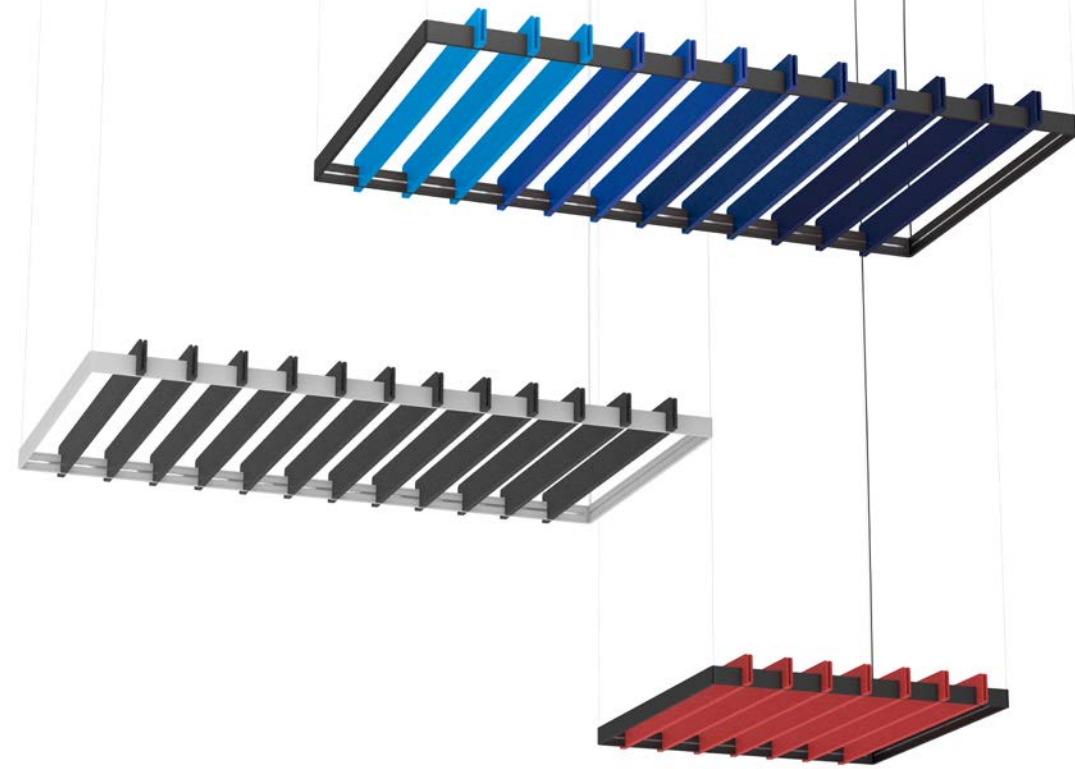
Products shown: Arena Square, Arena-Aim & Arena-Slice-Square



- ◀ Create edge lines of direct or indirect illumination with Arena-Slice-Square. The clean lines can carry an aesthetic from elsewhere in a space.

Acoustic

8297-8298



Acoustic panels for Arena Square are 36" or 54" wide. Panels may be added to Arena Straight with the addition of a gripper. Any quantity of panels can be specified; choose from 30 colors to create any gradient or pattern desired.

Choose an Arena-Acoustic for areas where noise is a concern, including high or unfinished ceilings, open offices, or waiting areas with a hard floor finish.

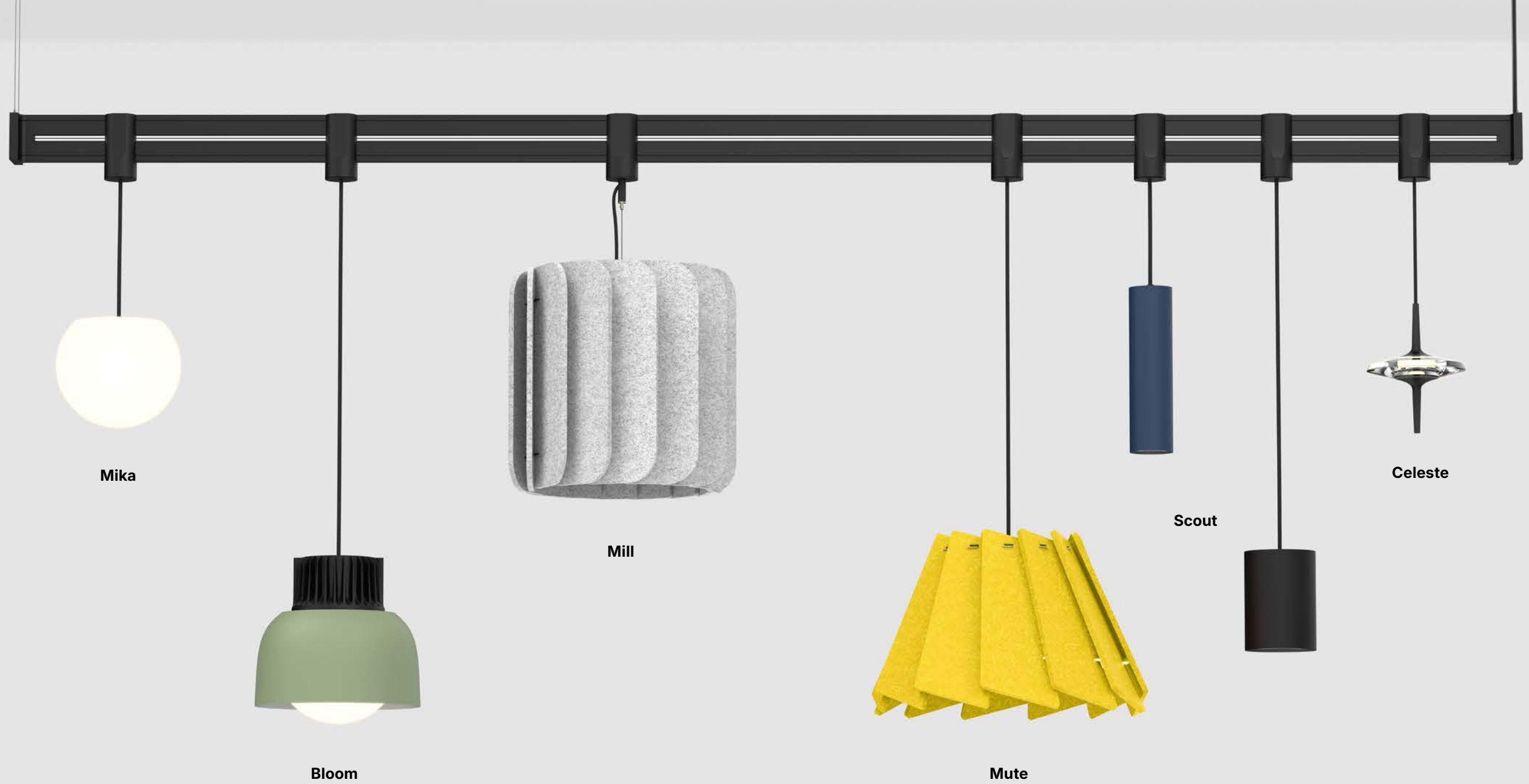
Standard colors



Premium colors



Products shown: Arena Square, Arena-Acoustic & Arena-Beam



Mika

Bloom

Mill

Mute

Scout

Celeste

Even more possibilities

An adapter allows multiple Eureka luminaires to be used on any Arena structure.

See product spec sheet for more details.



www.eurekalighting.com

AcuityBrands.